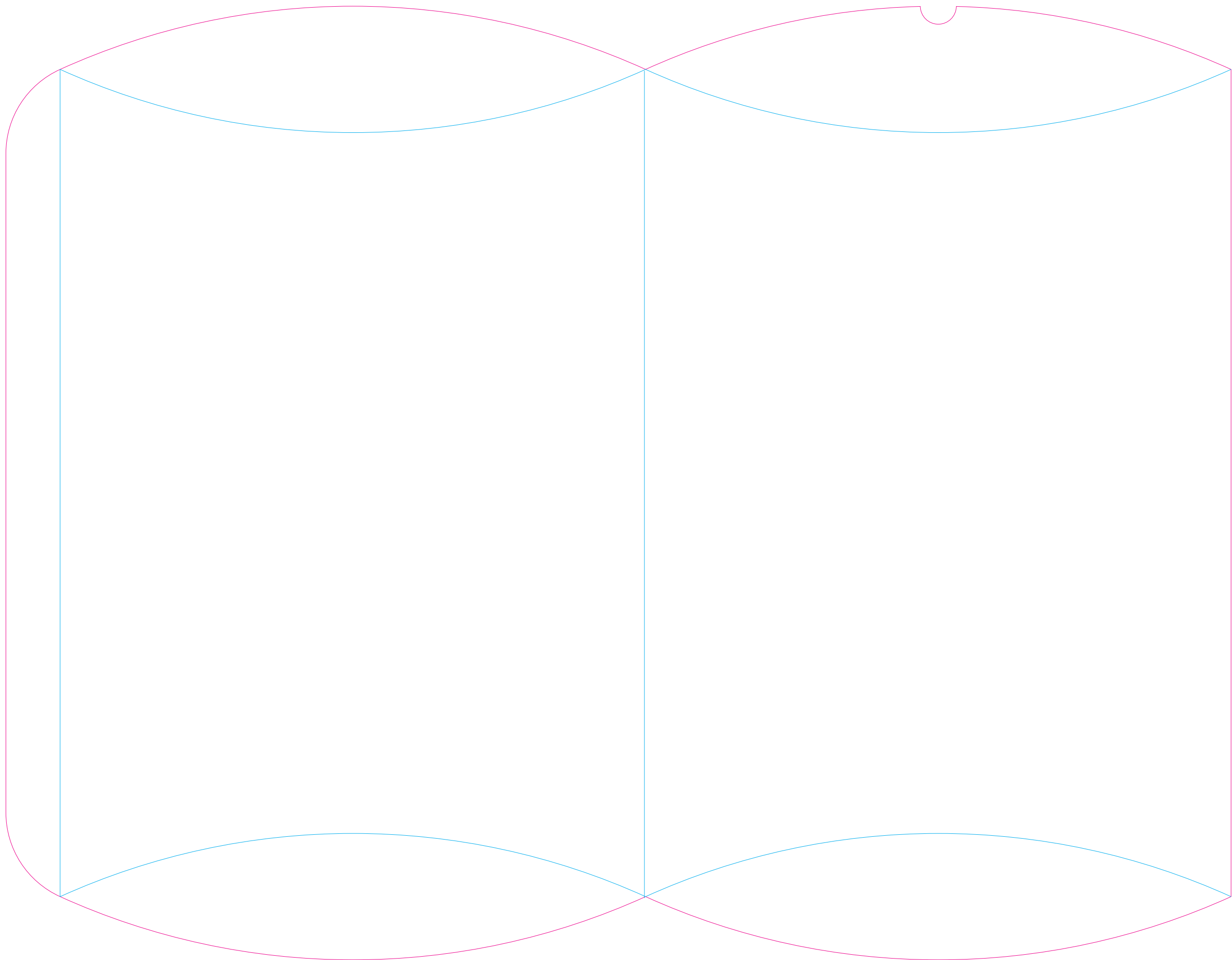


INSTRUCTIONS:

1. Place artwork in the 'Artwork' layer and fill to the edge of the canvas
2. Any important text / image should be well within the pink line. The pink line is the 'CUT LINE' of your box
3. Fill up the canvas space to the edge so that there is bleed for your box

PLEASE SUBMIT AS A LAYERED AI or PDF FILE



— CUT LINE
— CREASE LINE
— TAPE LINE